

DESCRIPTION

The GEFECO #SE900 MODULAR DECK JET SYSTEM has been in use since 1986 in the use for designs of dry plaza fountains. The modular deck jet system can be equipped with any number of types of water level independent jets as well as water switch technology. The sample shown in this model is a GEFECO Select #SE214 waterswitch operated GEFECO Select SE105-07 Stream Jet with a GEFECO Select #EE176 RGB LED DMX 30W 12VAC/12VDC/24VDC Ring Light, everything operating at 12-14VAC, 12VDC or 24VDC (specify) with the lighting system (SOLD SEPARATELY) controlled by DMX512 protocol. The modular deck jet system can be equipped without light options.

TYPICAL SPECIFICATIONS:

*** GEFECO Select #SE900 Modular Deck Jet System:**

- #16 Gauge SST niche.
- 2" or 3" NPT drain connection, SST.
- 1" or 1-1/2" jet supply connection, SST.
- cast bronze floor frame.
- 0.500" thick machined LEXAN cover.
- SST fitted.
- weight limit: 200 PSI

OPTIONS ADD:

- GEFECO Select #EE176 RGB Light.
 - GEFECO Select #EE176 RGBW Light.
 - GEFECO Select #SE214 Water Switch.
 - VOLTAGE: 12VAC, 12VDC or 24VDC
 - GEFECO Select #EE Electrical Gear.
 - GEFECO Select #SE Spray effects.
- See catalog for the above items.

OTHER Options:

- Other jet and light combinations available.
- LED lights WITHOUT DMX color control.
- Junction Box and cord seal connections.

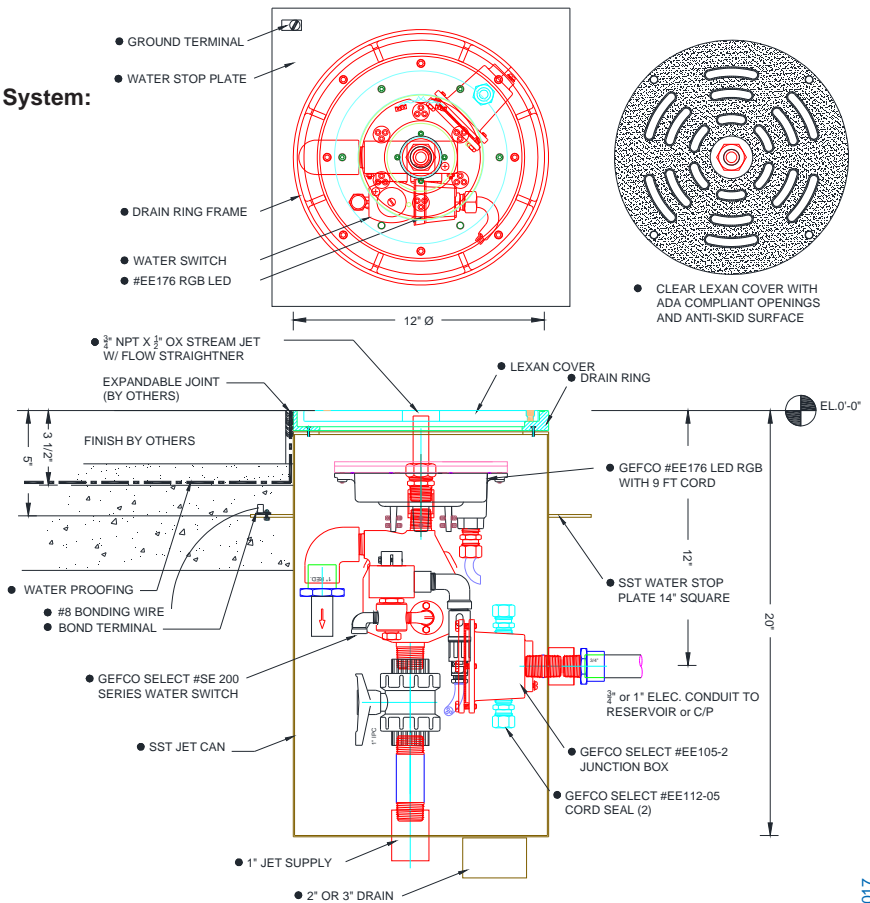
IMPORTANT NOTE:

*** WEIGHT LIMIT IS 2000 lbs. / sq.ft.**

- * install in a position to AVOID flooding of the surrounding area.
- * DO NOT install in a depressed position to allow the collection of debris.

IMPORTANT

The designers, installers and end users utilizing the electrical equipment described herein assume full responsibility for the compliance with the N.E.C and it's applicable articles, intents and consequences. Where the manufacturer and/or the supplier of the electrical equipment described herein does not control the application or usage, he assumes no responsibility whatsoever for any consequences arising out of the application, installation and/or usage of this or any other equipment and/or materials



IMPORTANT

Dimensions and/or Materials subject to change without notice