

**DESCRIPTION**

The **GEFCO Select #SE122-H Angular Fan Sprayhead** is designed for flush installation into the free board of swimming pools in warm climates to spray low over the pool and cool the pool water by evaporative cooling. The spray head can also be used for decorative purposes by casting it into walls.

The face of the spray head is smooth, the face plate is equipped with a set screw to permit alignment of spray. The face can only be removed with a #SE122-A, 2-Prong Wrench. The spray head is made of bronze and brass with stainless steel set screw, natural machined finish, chrome plating is extra.

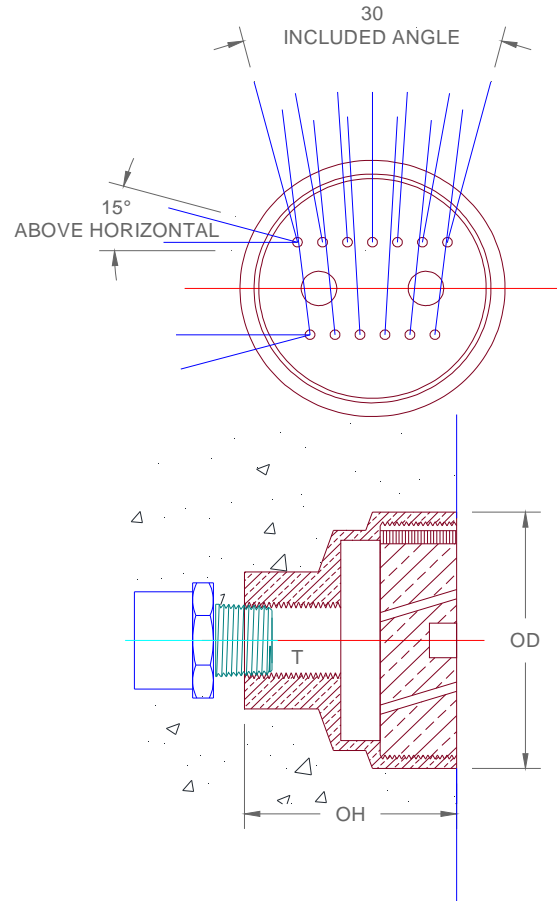
A GEFCO Select #SE137-Series Adjustment Flange is designed to correct the vertical adjustment of spray up to 5 degrees of vertical, for larger adjustment use a GEFCO Select #SE138-Series Swivel Union (both #SE137-Series and #SE138-Series can be ordered separately).

**TYPICAL SPECIFICATIONS:**

- \* **GEFCO Select SE122-H Angular Fan Sprayhead:**
- made of cast bronze body.
- (13) 3/16" dia. holes.
- brass vandal proof cover.
- 3/4" NPT female connection.

**ADDITIONAL INFORMATION:**

- Suction Straining required to be: **MAX. 0.040"**.
- **100 % Filtered water recommended.**

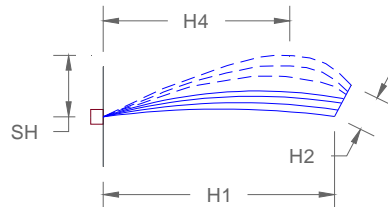


**DIMENSIONS:**

T	3/4"NPT
OH	2"
OD	2-1/2"
OS	3/32"
N	13

**PERFORMANCES:**

H1	H2	SH	H4	GPM	FH
Ft.	Ft.	Ft.	Ft.		Ft.
5	3	1	3	8	7
10	6	2	5	12	12
15	9	3	8	16	18
20	12	4	10	21	24



**IMPORTANT REQUIREMENT**

*Designers and Engineers shall be responsible for the accuracy of system flow rates and especially system head loss requirements. Stated flows and head pressure requirements for any listed spray height are required AT THE NOZZLE. Extrapolations for unlisted spray heights are at the sole responsibility of the Designers and/or Engineers.*

**IMPORTANT**

*Dimensions, Manufacturers and/or Materials subject to change without notice*