

**DESCRIPTION:**

**GEFCO Select #SE115-Series Water Castle Jets** create a 3 tiered or also known as the Fleur De Lis effect. They are made of cast bronze and copper flow diverters.

For sizing of small pools use this formula: 2 x spray height = minimum diameter of pool. Proper suction straining must be specified. 100% filtered water is recommended.

The GEFCO Select #SE137-Series Adjustment Flange is designed to correct the vertical adjustment of sprays up to 5 degrees off of vertical, for larger adjustments use a GEFCO Select #SE138-Series Swivel Union (both #SE137 and #SE138 Series can be ordered separately).

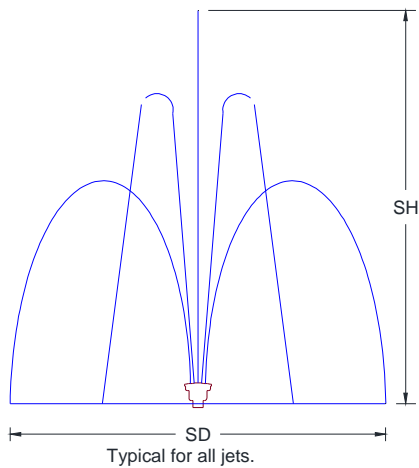
The GEFCO Select #SE115-Series Water Castle Jet can be installed on a GEFCO #PE109-Series Slab Penetration which will provide a rigid, non-corrosive waterproofing penetration.

**TYPICAL SPECIFICATIONS:**

- \* **GEFCO Select #SE115-XX** Water Castle Jet:
  - made of cast bronze and brass.
  - copper flow diverters.
  - (N) 1/8" dia. holes (specify).
  - (T) NPT female connection (specify).

**ADDITIONAL INFORMATION:**

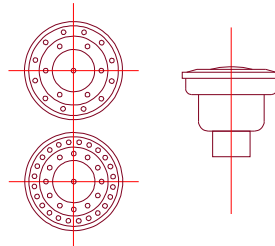
- Refer to SS at each jet table for suction size.
- 100% Filtered water recommended.



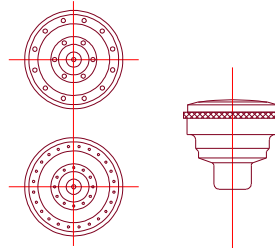
**IMPORTANT REQUIREMENT**

Designers and Engineers shall be responsible for the accuracy of system flow rates and especially system head loss requirements. Stated flows and head pressure requirements for any listed spray height are required AT THE NOZZLE. Extrapolations for unlisted spray heights are at the sole responsibility of the Designers and/or Engineers.

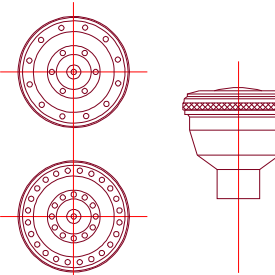
DIMENSIONS:					
SE115	-02			-03	
T	1/4"			1/4"	
OH	2"			2"	
OD	2"			2"	
N	19			37	
SS	.032"			.032"	
PERFORMANCES:					
SH	SD	FH		SD	FH
Ft.	Ft.	GPM	Ft.	Ft.	Ft.
2	2	2	5	2	3
3	2	3	7	2	4
5	3	3	11	3	5



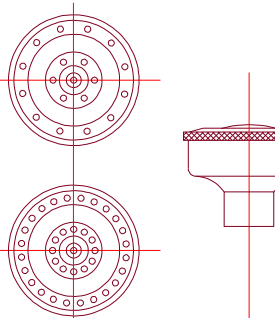
DIMENSIONS:					
SE115	-05			-06	
T	1/2"			1/2"	
OH	2 1/2"			2 1/2"	
OD	2 1/2"			2 1/2"	
N	19			37	
SS	.065"			.065"	
PERFORMANCES:					
SH	SD	FH		SD	FH
Ft.	Ft.	GPM	Ft.	Ft.	GPM
3	3	5	7	2	5
5	4	7	11	3	7
6	5	9	13	4	8



DIMENSIONS:					
SE115	-07			-08	
T	3/4"			3/4"	
OH	3.7"			3.7"	
OD	3.385"			3.385"	
N	19			37	
SS	.094"			.065"	
PERFORMANCES:					
SH	SD	FH		SD	FH
Ft.	Ft.	GPM	Ft.	Ft.	GPM
5	7	17	8	6	18
6	9	20	9	8	21
8	11	25	11	10	25
10	13	28	13	12	29



DIMENSIONS:					
SE115	-12			-13	
T	1 1/4"			1 1/4"	
OH	2.6"			2.6"	
OD	4 1/4"			4 1/4"	
N	19			37	
SS	.094"			.065"	
PERFORMANCES:					
SH	SD	FH		SD	FH
Ft.	Ft.	GPM	Ft.	Ft.	GPM
5	6	22	9	4	33
8	10	27	15	7	39
10	15	31	22	10	44
12	17	35	27	14	48
15	21	42	35	18	56
20	29	59	52	25	74
25	36	82	73	30	105



**IMPORTANT**

Dimensions, Manufacturers and/or Materials subject to change without notice